

At some transmission types is from different reasons required that the chain must be connected as endless, it means to be without a disassembling connecting link. A riveting (outer) link is used for connecting in these chains. The chain connection is mostly made out of the transmission and then the connected chain is mounted on the chain wheels, which must be modified for this type of connection (for example wheel sliding on the shaft). Special tools must be used for this type of assembly.

Disassembly

If the chains are connected by removable connecting links, the disassembly is easy and proceeds in a reverse sequence than by the assembly of the chain, which was described in the chapter before. Chains connected as endless ones which have to be disassembled directly on the chain transmission must be disassembled by special tools. These make disassembling easier and do not damage the transmission. Disposed is only the outer link, by which is the chain disassembled, this one cannot be used anymore. Each disassembly of the endless chain is destructive.

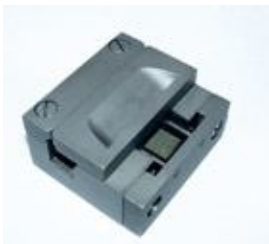
Chain disassembly out of the equipment

If we disassembly the chain out of the transmission, it is better to grind the unriveted pin heads, and then by the tool as shows Layout 13, knock out the pins from outer plate with the help of a mandrel and a hammer. All types of assembling and disassembling tools are available in CZ Retezy s.r.o., or at our distributors.



Layout13. Chain disassembly with the help of a mandrel and a hammer.

Tooling for hand disassembling of the chain



TYPE DP 1



TYPE DP 2

TYPE	using range
DP 1	pitch 9,525 - 19,05
DP 2	pitch 25,4

TYPE	using range
VZR 1	F 100, F 200, F 300, 082
VZR 2	pitch 9,525 - 15,875
VZR 3	pitch 25,4

Tooling for chain disassembling



TYPE VZR 1



TYPE VZR 2



TYPE VZR 3

